

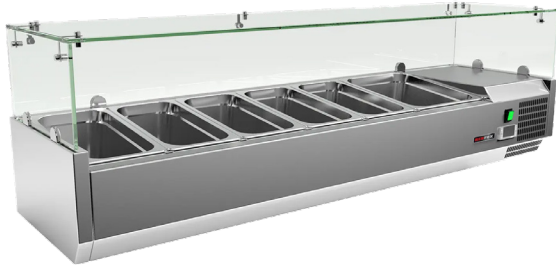
# Technical data sheet



## Product features

### Cooling display 1x GN 1/2 + 5x GN 1/3

<b>Model</b>	<b>SAP Code</b>	00013364
MCH 3150	<b>A group of articles - web</b>	Cooling and freezing tables



- Material: Stainless steel
- GN / EN size in device: 1xGN1/2 + 5x GN 1/3
- Number of GN / EN: 6
- Control type: Digital
- Minimum device temperature [°C]: 2
- Maximum device temperature [°C]: 8
- Insulation thickness [mm]: 40
- Unit: Right

<b>SAP Code</b>	00013364	<b>Number of GN / EN</b>	6
<b>Net Width [mm]</b>	1500	<b>GN / EN size in device</b>	1xGN1/2 + 5x GN 1/3
<b>Net Depth [mm]</b>	395	<b>GN device depth</b>	150
<b>Net Height [mm]</b>	440	<b>Minimum device temperature [°C]</b>	2
<b>Net Weight [kg]</b>	49.00	<b>Maximum device temperature [°C]</b>	8
<b>Power electric [kW]</b>	0.125	<b>Refrigerant</b>	R290
<b>Loading</b>	230 V / 1N - 50 Hz	<b>Refrigerant weight [g]</b>	33.00
<b>Chamber volume [l]</b>	54	<b>Climate class</b>	4

# Technical data sheet

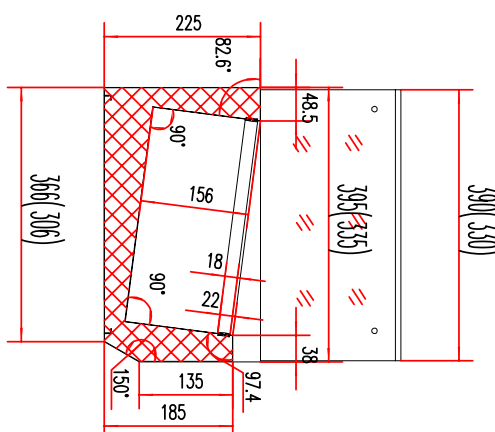
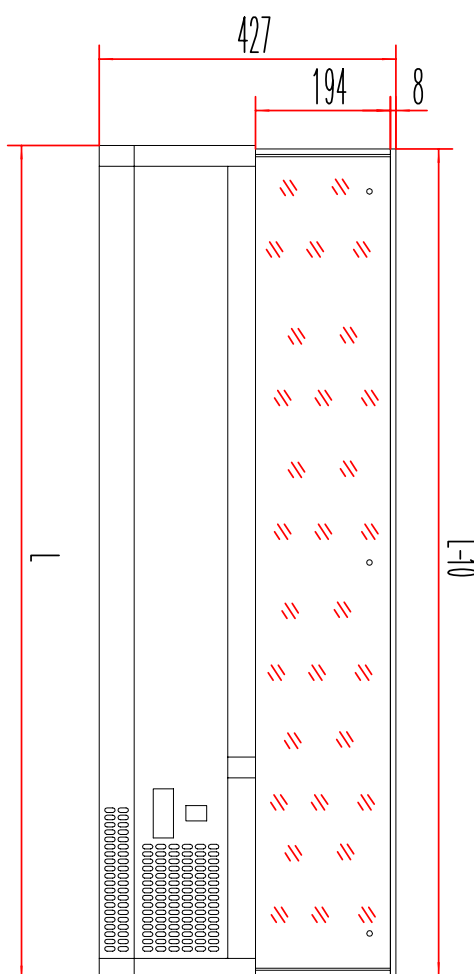


Technical drawing

Cooling display 1x GN 1/2 + 5x GN 1/3

<b>Model</b>	<b>SAP Code</b>	00013364
MCH 3150	<b>A group of articles - web</b>	Cooling and freezing tables

MCH3120/MCH4120	1200
MCH3140/MCH4140	1400
MCH3150/MCH4150	1500
MCH3160/MCH4160	1600
MCH3180/MCH4180	1800
MCH4200	2000



# Technical data sheet



## Technical parameters

### Cooling display 1x GN 1/2 + 5x GN 1/3

<b>Model</b>	<b>SAP Code</b>	00013364
<b>MCH 3150</b>	<b>A group of articles - web</b>	Cooling and freezing tables

**1. SAP Code:**

00013364

**2. Net Width [mm]:**

1500

**3. Net Depth [mm]:**

395

**4. Net Height [mm]:**

440

**5. Net Weight [kg]:**

49.00

**6. Gross Width [mm]:**

1590

**7. Gross depth [mm]:**

435

**8. Gross Height [mm]:**

310

**9. Gross Weight [kg]:**

54.00

**10. Device type:**

Electric unit

**11. Power electric [kW]:**

0.125

**12. Loading:**

230 V / 1N - 50 Hz

**13. Refrigerant:**

R290

**14. Cooling type:**

Static

**15. Material:**

Stainless steel

**16. Exterior color of the device:**

Stainless steel

**17. Additional information:**

GN are not included

**18. Device properties 2:**

Cooling

**19. GN / EN size in device:**

1xGN1/2 + 5x GN 1/3

**20. Number of internal parts:**

6

**21. Number of GN / EN:**

6

**22. GN device depth:**

150

**23. Chamber volume [l]:**

54

**24. Insulation thickness [mm]:**

40

**25. Unit:**

Right

**26. Control type:**

Digital

**27. Minimum device temperature [°C]:**

2

**28. Maximum device temperature [°C]:**

8

# Technical data sheet



Technical parameters

Cooling display 1x GN 1/2 + 5x GN 1/3

<b>Model</b>	<b>SAP Code</b>	00013364
MCH 3150	<b>A group of articles - web</b>	Cooling and freezing tables

**29. Refrigerant weight [g]:**

33.00

**32. Climate class:**

4

**30. Gross Volume [m3]:**

0.214

**33. Cross-section of conductors CU [mm<sup>2</sup>]:**

0,5

**31. Net Volume [m3]:**

0.261